

ORWAK

5030 NEW CLASSIC



OPERATING INSTRUCTIONS (IN THE ORIGINAL)



CONTENTS

Safety	2
Operating instructions.....	3
Technical specifications....	4
Dimensional sketch	4
Transport	4
Installation	5
Weekly inspection and maintenance	6
CE.....	7

SAFETY

Please read the operating instructions BEFORE operating the machine.

Our warranty/product responsibility requires that:

- **instructions are followed, and that no conversion or modification is carried out.**
- **original spare parts, and hydraulic oils and lubricants recommended by the machine manufacturer are used.**
- **at least one annual service is carried out.**

The user of the machine is responsible for the safety checks, and for ensuring that daily maintenance of the machine is carried out. The user is responsible for seeing to it that defects are rectified, and that neither the user nor other persons are subjected to danger.

The owner is responsible for ensuring that all laws and instructions are complied with when using the machine.



This symbol means WARNING or DANGER - personal safety instruction!



This machine is designed for **ONE MAN OPERATION**.

Only the operator is allowed in the machine's working area.



The machine must **not** be used if the **safety functions** (e.g. switches and protections) have been deactivated, damaged or removed.

Lost or damaged parts must be replaced with **original spare parts**.



The machine has a **high centre of gravity**. If the machine needs to be moved, the press plate **must** be lowered fully before moving.



Installation and service work may **only** be performed by **qualified and competent** staff, and in accordance with the installation and service instructions.



The machine **must not** be used by minors.



Never climb on the machine.



The machine may only be operated by a person who has received training and has experience of the machine.



Use **both** hands on the handle when moving the press unit forwards or backwards. Do not overfill!

PREMISES

The machine must not be used in areas where there is an increased risk of explosions. Check whether there are any local regulations. The machine may only be used in areas that have a roof, protection against wind and normal lighting.

SAFETY FEATURES

The machine is equipped with the following safety features:

Covers and guards conceal hydraulic lines and movable machine parts. **Limit switches** that prevent compacting when the press plate is not in the compacting position. Gas struts that damp the speed when the waste drum is lowered.

RANGE OF APPLICATION

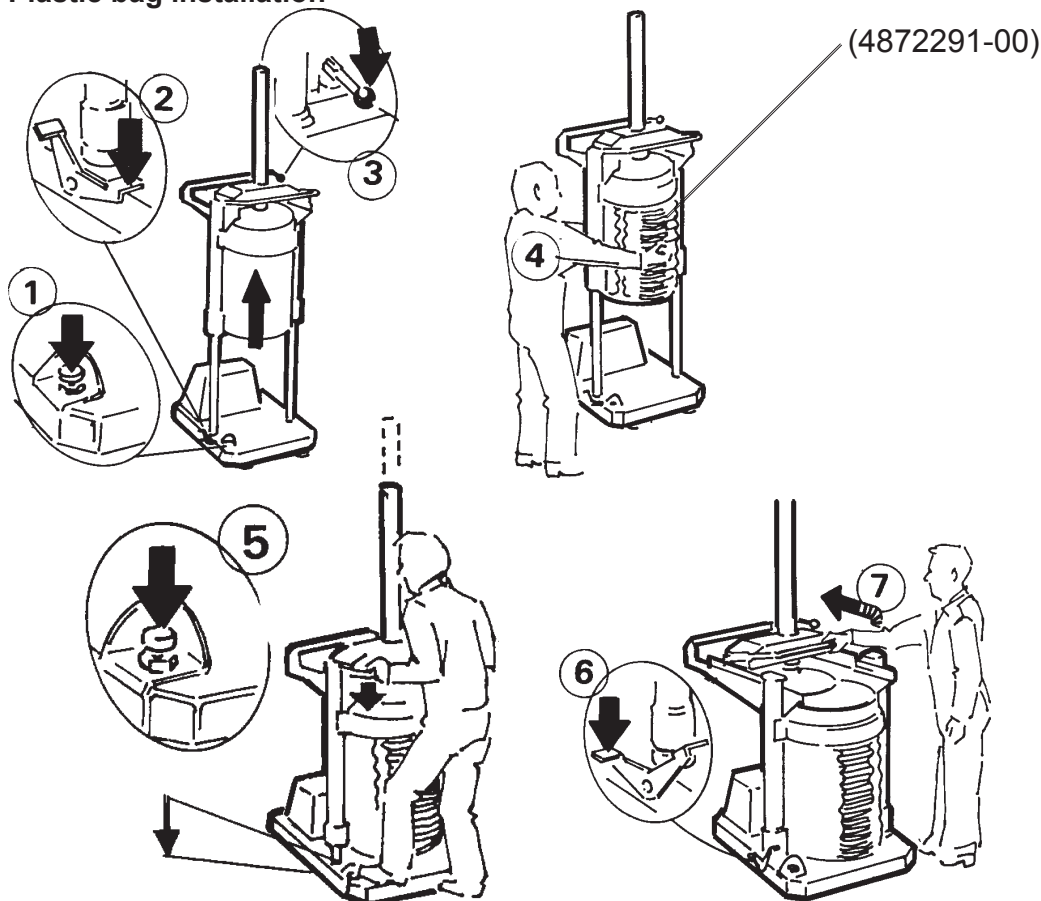
The machine is hydraulically operated and intended for compacting voluminous waste in plastic bags. The machine is intended for use within the temperature range -10°C (14°F) to +40°C (104°F). A low-temperature oil should be used at temperatures lower than +5°C.



Materials that are **flammable** or of an **explosive** nature, such as pressurised containers or equivalent which, when exposed to pressure or sparks, could cause damage, fire or an explosion, **must not** be compacted in the machine.

OPERATING INSTRUCTIONS

Plastic bag installation

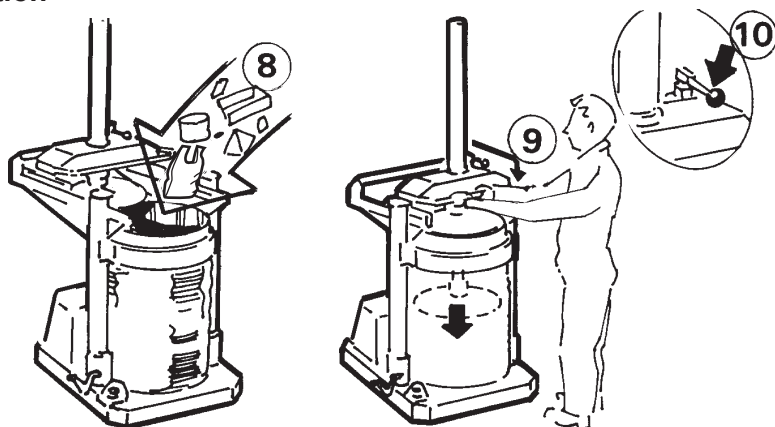


⚠ WARNING!
Only the operator is allowed in the machine's working area!

Plastic bag installation

- 1 Press down the button on the bottom plate for at least two seconds.
- 2 Then press the foot pedal as shown in the picture.
- 3 Press down the lever valve - the drum unit travels up.
- 4 Thread the plastic bag on the outside of the drum.
- 5 Press in the button on the bottom plate again - the drum unit travels down.
- 6 Lock the drum by pressing the foot pedal as shown in the picture.
- 7 Push back the press unit - the machine is ready to use.

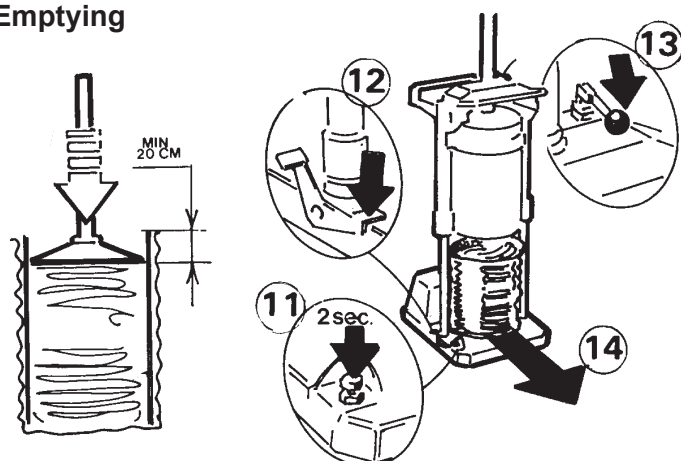
Compaction



Compaction

- 8 Place the waste in the drum.
- 9 Use both hands on the handle and pull the press unit back over the drum.
- 10 Press down the lever valve for the automatic compaction cycle.

Emptying



Emptying

When there is approximately 20 cm left between the waste and the edge of the drum, it is time for the drum to be emptied:

- 11 Press down the button on the bottom plate for at least two seconds.
- 12 Then press the foot pedal as shown in the picture.
- 13 Press the lever valve down - the press plate lowers and, after a while, the drum unit is raised.
- 14 Tie up the plastic bag and remove it from the bottom plate. Start again from picture 4 above.

English

TECHNICAL SPECIFICATIONS

GENERAL DATA

Total weight: 262 kg
Chamber: 184 kg
Press unit: 78 kg

Dimensions:

Height: 1940 mm
Width: 760 mm
Depth: 1045 mm

Recommended space for a machine in operation:

Height: 2700 mm
Width: 1960 mm
Depth: 2245 mm

Loading aperture:

ø500 mm

Noise level: 62 (± 1.0) dB (A)
(ISO 11200 & 11202)

Paint: Two-part paint and powder coat with phosphatising as base.

RAL7037 (grey)

RAL2001 (orange)

ELECTRICAL DATA

Operating power:

230 V, 50/60 Hz

Electric motor: 1.1 kW

Protection class: IP 55

HYDRAULIC DATA

Working pressure:

110 bar (1600 psi)

Overflow pressure:

140 bar (2030 psi)

Compaction force:

3 tons (30 kN)

Compaction force/cm²:

1.5 kg

Oil volume: 8.2 L

Recommended hydraulic oil:

+5°C to +60°C:

ISO VG 32-68,

Mineral oil

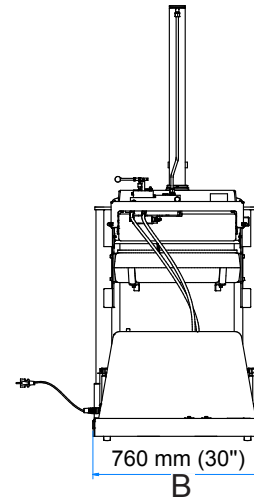
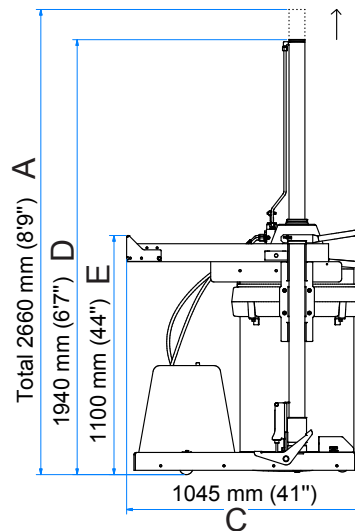
below 5°C:

A special oil or a heater may be needed at lower temperatures.

Piston stroke:

790 mm

DIMENSIONS



5030

A=2660

B=760

C=1045

D=1940

E=1100

5030 C

A=2360

B=760

C=1045

D=1640

E=1100

5030 BMT

A=2040

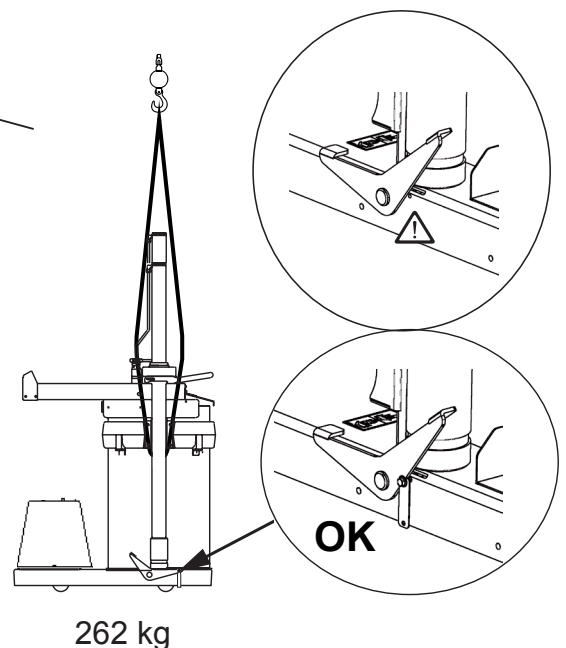
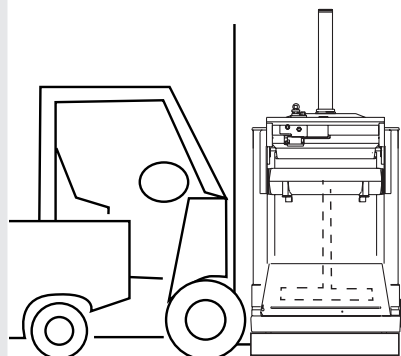
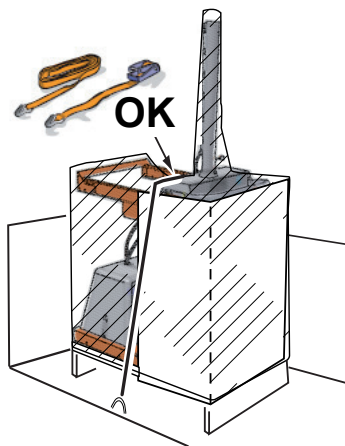
B=760

C=1045

D=1640

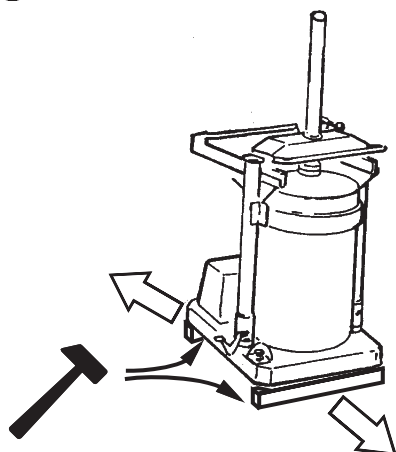
E=1000

TRANSPORT

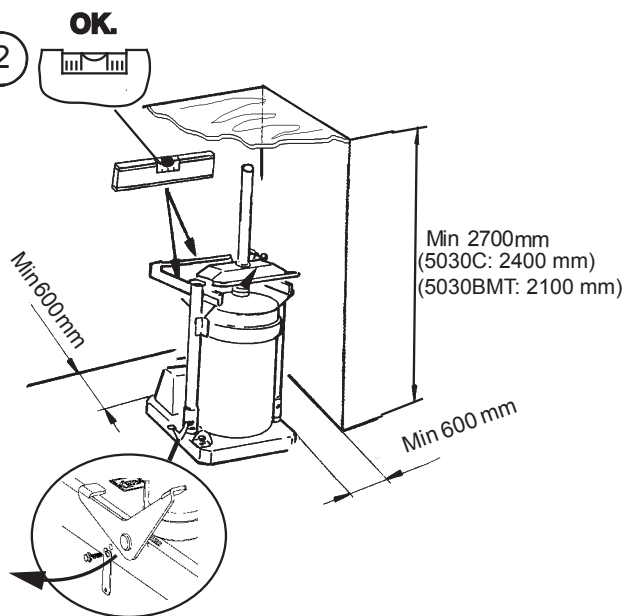


INSTALLATION

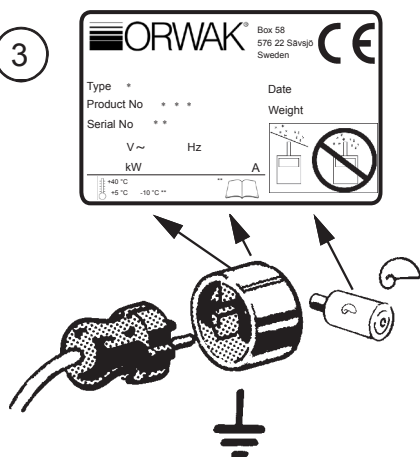
1



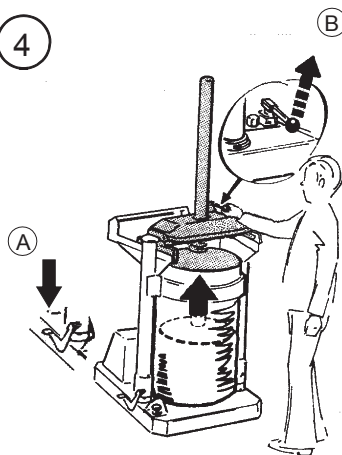
2



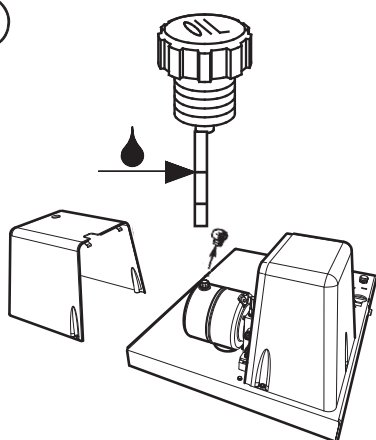
3



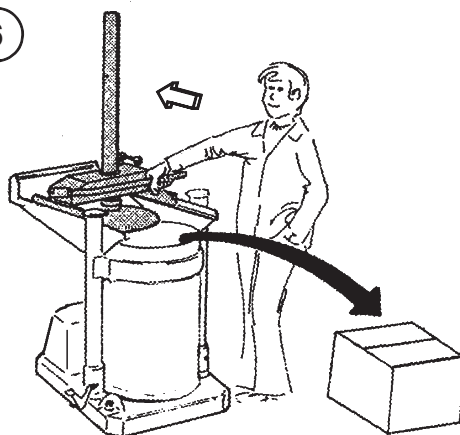
4



5



6



RECYCLING AND DISPOSAL of THE MACHINE

In the event of the machine being scrapped, the applicable environmental legislation relating to disposal and recycling should be complied with. The machine is mainly constructed of sheet steel. It also contains electrical and hydraulic components, as well as hydraulic oil (the volume of hydraulic oil, in litres, is indicated in the section *Technical specifications*).

English

WEEKLY INSPECTION AND MAINTENANCE



NOTE! During inspection and maintenance, service work and the removal of trapped waste etc.:

1. Always place the valve lever in the neutral position and disconnect the plug.
2. Do not work inside the machine

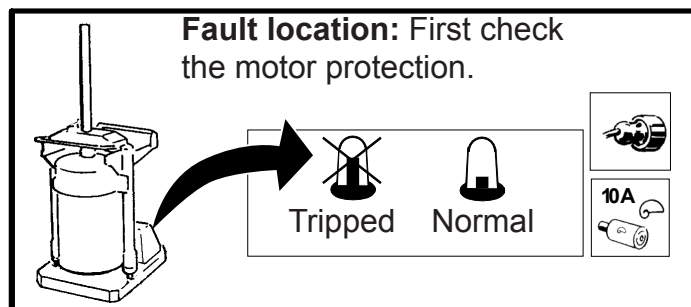
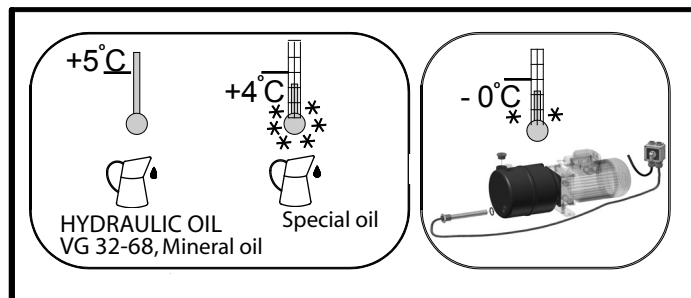
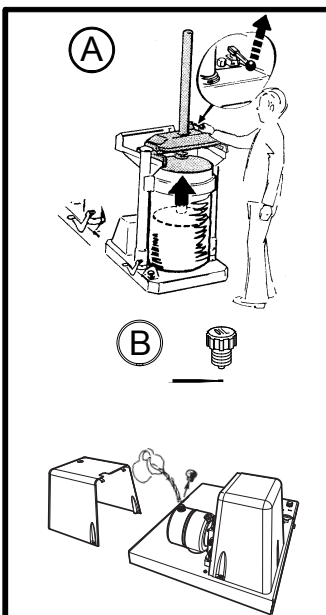
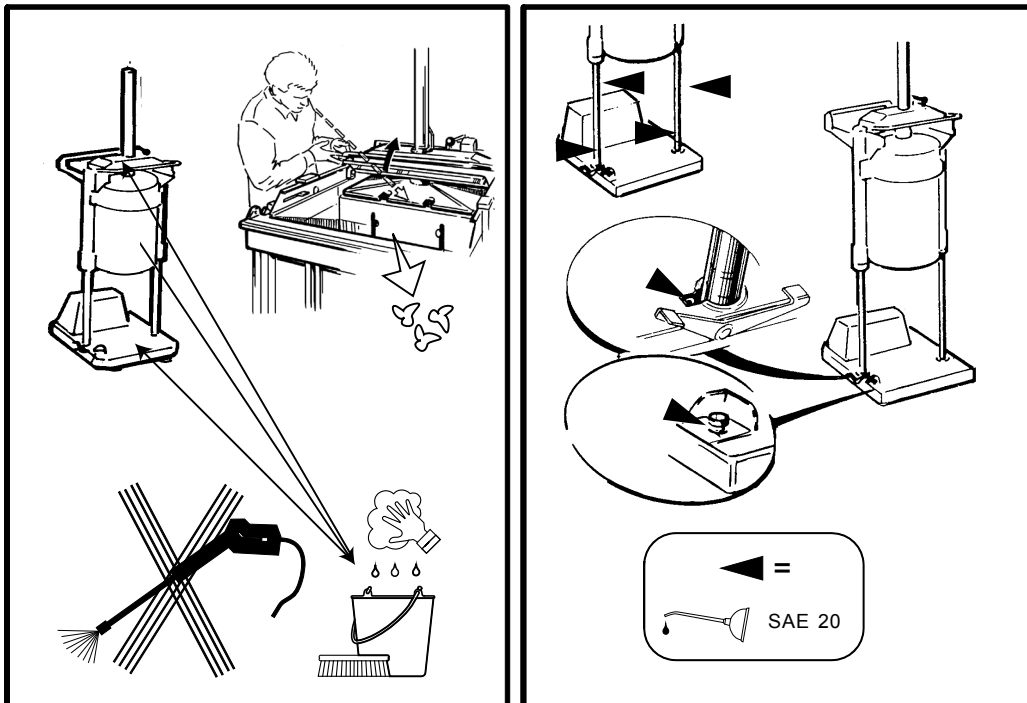
SAFETY CHECK

- Check the limit switch and the plastic piston that is actuated by the switch in accordance with the instructions in the service instruction.
 - Every time the plastic bag is changed, check that the two gas struts at the lower end of the telescopic legs damp the speed when the waste drum is lowered.
 - Check that no parts are loose or damaged.
 - Check that the electrical supply cable is intact and properly protected against impact.
- If any faults are discovered in the functions listed above, the machine must **not** be used until it has been repaired by authorised service personnel.
- Contact service personnel immediately if the press plate can be started in any position other than directly above the waste drum.

Service and repairs are only to be performed by qualified and competent staff, and in accordance with the machine manufacturer's instructions.



Oil change: Contact the local authorities for advice regarding how to reduce the environmental impact when dealing with residual oil.



EC DECLARATION OF CONFORMITY



Orwak AB
Box 58
S-576 22 Sävsjö, Sweden
Tel: 46-382-15700

declares under its sole responsibility that the product model

4905030-100 - 4905030-199
4905030-S001 - 4905030-S999

to which this declaration relates is in conformity with the following standards or other normative documents following the provisions of Directive

2006/42/EEC (Machinery Directive)
2004/108/EEC (EMC Directive)

The machine fulfils the requirements of PL =
c and category 1 according to EN ISO 13849-1:2008

EN 60204-1 (Safety of Machinery - Electrical Equipment of Machines)
EN 61000-6-1 (EMC Immunity for equipment in residential, commercial and light-industrial environments)
EN 61000-6-2 (EMC Immunity for equipment in industrial environments)
EN 61000-6-3 (EMC Emissions from equipment in residential, commercial and light-industrial environments)
EN 61000-6-4 (EMC Emissions from equipment in industrial environments)
EN ISO 13849-1 (Safety of Machinery – Safety-related parts of control systems)

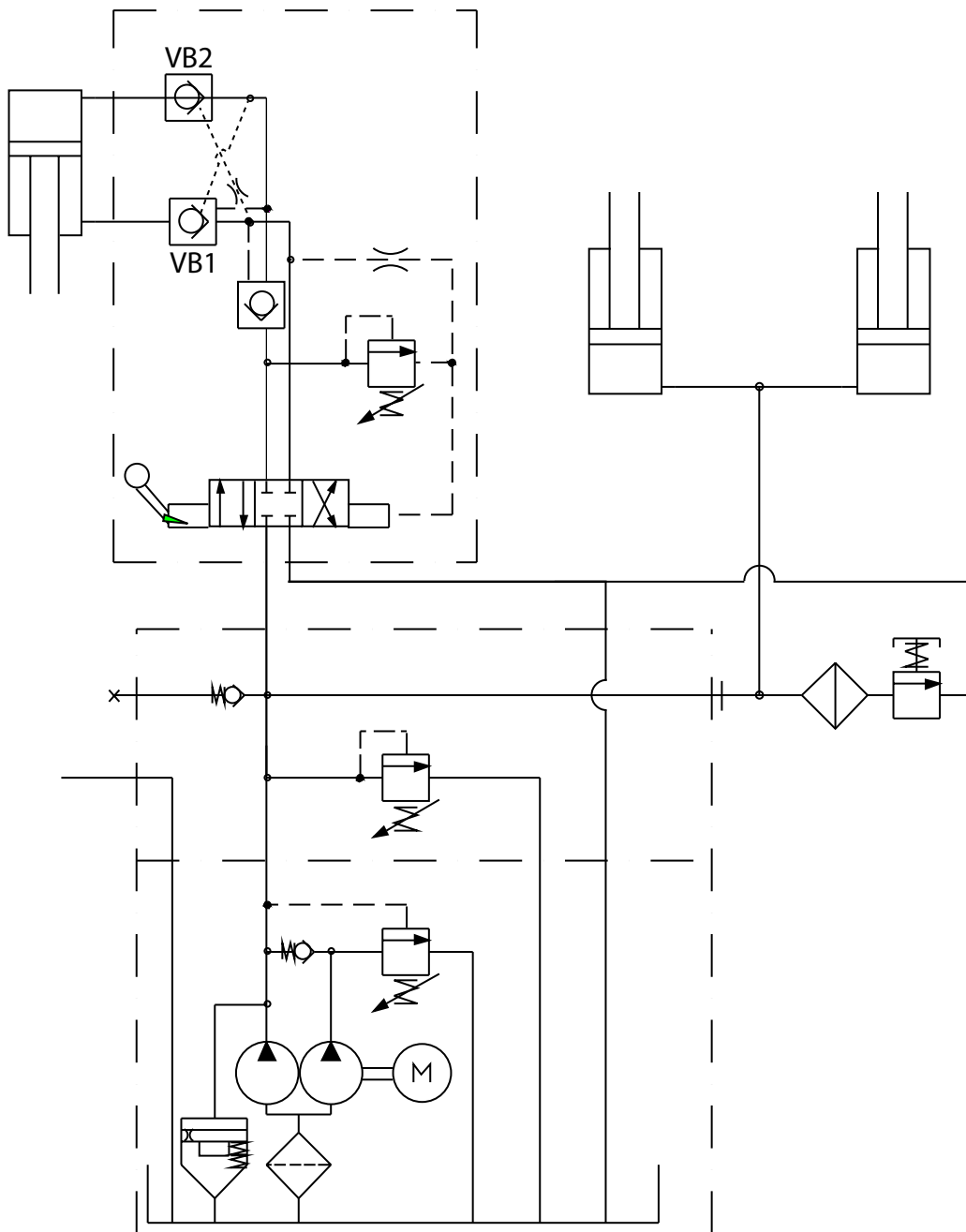
Sävsjö 2015-08-31

A handwritten signature in blue ink, appearing to read "Arto Kangas".

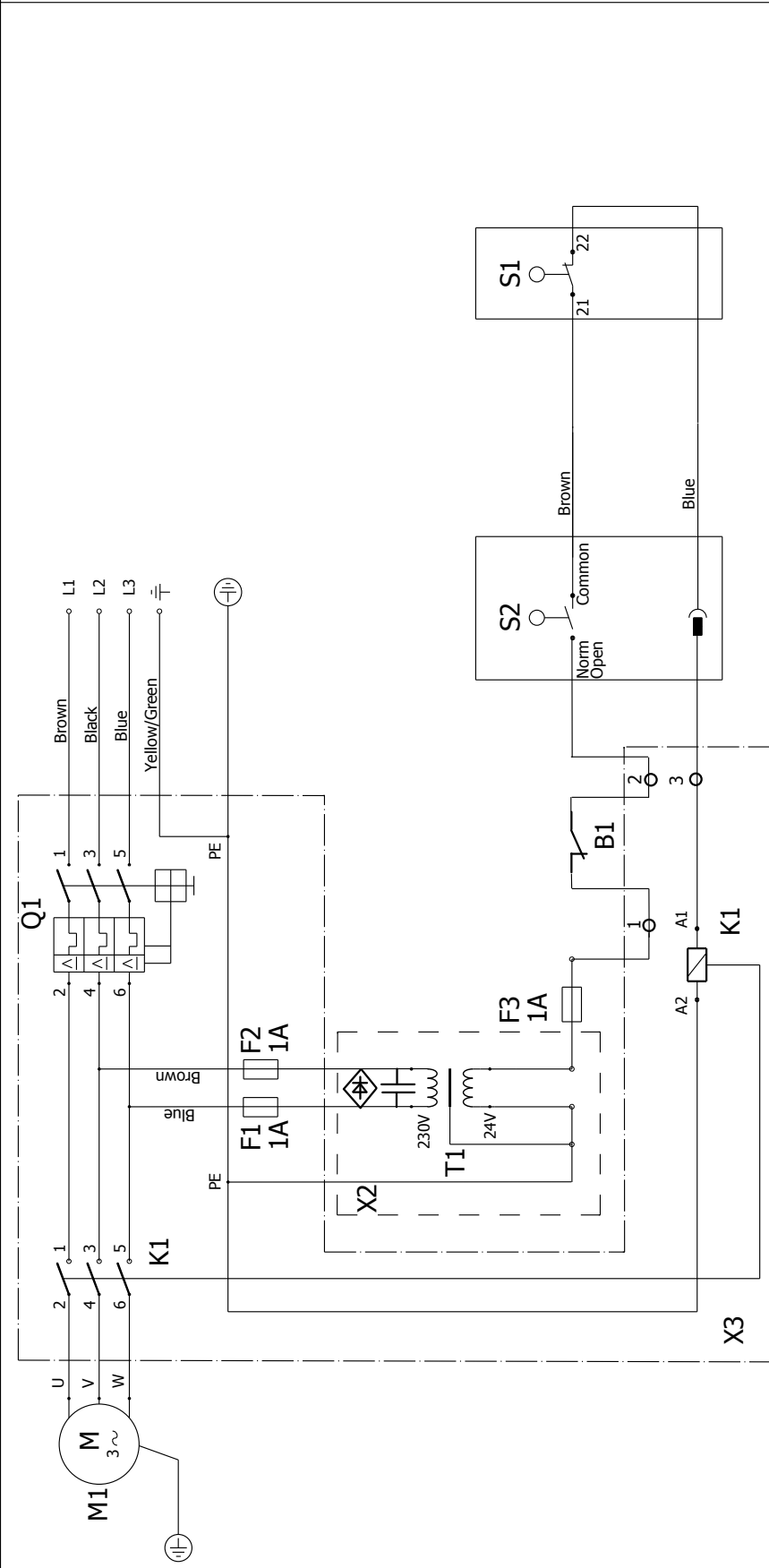
Arto Kangas

Compiler of technical documentation

HYDRAULIC DIAGRAM



ELECTRIC DIAGRAM



ELECTRICAL COMPONENT SPECIFICATION/ELKOMPONENTFÖRTECKNING

KOMPONENT DESCRIPTION/BENÄMNING

F1-3	Fuse/Glafsörssäkring				
K1	Motor contactor/Motorkontaktor				
M1	Motor				
Q1	Motor protection device/Motorskydd				
S1	Limit switch/Gränslägesbrytare				
S2	Valve/Ventil				
S3	Emergency stop/Nödstop				
T1	Transformer/Transformator				
V1	Varistor				

Drawing shows Power off
Machine at ready

Ritningen visar Spänning av
Maskin klar



OR 5030 Elektriskt schema		Konstr. JF	Ritad JF	Godk.	Supercedes dia. no / date
		Operating voltage / Driftspänning 3x230V 60Hz		Applies from serial number 58178	
		Control voltage / Manöverspänning 24V 60Hz		Product number	
				Date 2016-07-06	
				Diagram number 4868985-00	

COMPACTION SOLUTIONS FOR MOST TYPES OF WASTE

ORWAK develops solutions for sorting and recycling waste materials that improve business efficiency, contribute to a cleaner working and natural environment to provide the best total waste handling economy.

We offer an innovative range of products that promotes sorting at source and make waste management more profitable.

ORWAK AB
Box 58
S-57622 Sävsjö
SWEDEN
Tel: +46-(0)382-15700
info@orwak.com

www.orwak.com

